

DESIGN



CHRISTIE'S

DESIGN

AUCTION

Friday, 9 December 2022
11.00 am (Lots 301-458)

20 Rockefeller Plaza
New York, NY 10020

VIEWING

Friday	2 December 2022	10am-6pm
Saturday	3 December 2022	10am-6pm
Sunday	4 December 2022	10am-5pm
Monday	5 December 2022	10am-5pm
Tuesday	6 December 2022	10am-5pm
Wednesday	7 December 2022	10am-5pm
Thursday	8 December 2022	10am-5pm
Friday	9 December 2022	10am-5pm

*AUCTION CODE AND NUMBER

In sending absentee bids or making enquiries, this sale should be referred to as
20980-STAG

ABSENTEE AND TELEPHONE BIDS

Tel: +1 212 636 2000



Please scan for complete auction information

CHRISTIE'S



PROPERTY FROM AN IMPORTANT PRIVATE COLLECTION

301

CHARLOTTE PERRIAND (1903-1999)
LOW STOOL, DESIGNED CIRCA 1953

ash
10 $\frac{1}{2}$ in. (27 cm) high, 12 $\frac{1}{2}$ in. (32.1 cm) diameter

\$3,000-5,000



PROPERTY FROM A PRIVATE FRENCH COLLECTION

302

CHARLOTTE PERRIAND (1903-1999)
STOOL, DESIGNED CIRCA 1953

white cherry
15 $\frac{1}{4}$ in. (40 cm) high, 13 in. (33 cm) diameter

\$4,000-6,000



PROPERTY FROM A PRIVATE FRENCH COLLECTION

303

SERGE MOUILLE (1922-1988)
'COCOTTE' TABLE LAMP, CIRCA 1957

lacquered steel, brass, lacquered aluminium
11 $\frac{1}{2}$ x 12 x 8 $\frac{1}{2}$ in. (29.2 x 30.5 x 21.9 cm)

\$6,000-8,000



PROPERTY FROM AN IMPORTANT PRIVATE COLLECTION

304

JEAN PROUVÉ (1901-1984)
'DIRECTION' ARMCHAIR, MODEL NO. 352, CIRCA 1951

executed by Ateliers Jean Prouvé, Nancy
painted folded sheet and tube steel, original vinyl, oak
32 $\frac{1}{4}$ x 23 $\frac{3}{8}$ x 22 $\frac{1}{2}$ in. (82 x 60.4 x 57.2 cm)

\$50,000-70,000



PROPERTY FROM A PRIVATE FRENCH COLLECTION

305

JEAN PROUVÉ (1901-1984)

DESK, MODEL NO. 500, AND CHAIR, MODEL NO. 305, BOTH FROM THE MARITIME EXCHANGE, PARIS, CIRCA 1953

oak, beech, steel, rubber

desk: 28¼ x 59 x 20⅞ in. (72.7 x 149.8 x 53 cm)

chair: 31¾ x 16¾ x 18½ in. (80.7 x 41.6 x 47 cm)

\$15,000-20,000



PROPERTY FROM AN IMPORTANT INTERNATIONAL COLLECTION

306

SERGE MOUILLE (1922-1988)

APPLIQUE À TROIS BRAS FIXES, CIRCA 1953

painted aluminum, painted steel, brass

60½ x 56½ x 18⅞ in. (153.7 x 143.5 x 46 cm)

\$20,000-30,000



PROPERTY FROM AN IMPORTANT EAST COAST COLLECTOR

309

CHARLOTTE PERRIAND (1903-1999)

RARE 'EN FORME' DESK, CIRCA 1949

ash, ash-veneered beech, aluminium, steel

28¼ x 86½ x 39¾ in. (71.8 x 219.7 x 101 cm.)

\$300,000-500,000



PROPERTY FROM AN IMPORTANT EAST COAST COLLECTOR

310

CHARLOTTE PERRIAND (1903-1999)

RARE 'OMBRE' CHAIR, DESIGNED CIRCA 1954

bent laminated wood

25⅞ x 17¼ x 20 in. (64.5 x 43.8 x 50.8 cm)

branded *ChPerriand*

\$60,000-80,000



PROPERTY OF A PRIVATE LOS ANGELES COLLECTION

307

JEAN PROUVÉ (1901-1984)

PAIR OF 'MÉTROPOLE' CHAIRS, MODEL NO. 305, CIRCA 1950

painted steel, wood, aluminium

32⅞ x 16¼ x 18½ in. (81.6 x 41.3 x 47 cm)

\$15,000-20,000



PROPERTY OF A PRIVATE LOS ANGELES COLLECTION

308

JEAN PROUVÉ (1901-1984)

PAIR OF 'MÉTROPOLE' CHAIRS, MODEL NO. 305, CIRCA 1950

painted steel, wood, aluminium

32⅞ x 16¼ x 18½ in. (81.6 x 41.3 x 47 cm)

\$15,000-20,000



311

JEAN PROUVÉ (1901-1984)

SOUNDPROOF PANEL, CREATED FOR LE CENTRE NATIONAL D'ENSEIGNEMENT TECHNIQUE DE CACHAN, 1955

folded sheet steel, perforated sheet aluminium

72¼ x 148½ x 16 in. (183.5 x 377.2 x 40.6 cm)

\$60,000-80,000



PROPERTY FROM AN IMPORTANT PRIVATE COLLECTION

312

JEAN PROUVÉ (1901-1984)

RARE 'BANQUETTE', MODEL NO. 365, CIRCA 1956

painted steel, original simili cuir upholstery

32¼ x 59¾ x 26¾ in. (82 x 150.8 x 68 cm)

\$150,000-250,000



PROPERTY FROM AN IMPORTANT PRIVATE COLLECTION

313

JEAN PROUVÉ (1901-1984)

CHAIR, MODEL NO. 4, CIRCA 1935

manufactured by Ateliers Jean Prouvé, Nancy
painted steel, birch plywood, brass
29¼ x 15½ x 18¾ in. (74.3 x 39.7 x 47.9 cm)

\$15,000-20,000



PROPERTY FROM A PRIVATE FRENCH COLLECTION

314

JEAN PROUVÉ (1901-1984)

CITÉ TROPIQUE DESK, MODEL NO. 501, CIRCA 1951

painted steel, aluminium
28¾ x 35¾ x 27½ in. (71.8 x 91.1 x 69.9 cm)

\$30,000-50,000



317

CHARLOTTE PERRIAND (1903-1999)

DINING TABLE, CIRCA 1950

mahogany
28¾ 77½ x 32½ in. (73 x 196.9 x 82.5 cm)

\$40,000-60,000



PROPERTY FROM AN AMERICAN PRIVATE COLLECTION

318

GEORGE JOUVE (1910-1964)

MIRROR, CIRCA 1950

glazed ceramic, mirrored glass
20 x 14¾ x 3 in. (50.8 x 37.5 x 7.6 cm)
incised *MADE IN FRANCE* and with artist's cypher

\$10,000-15,000



PROPERTY FROM AN IMPORTANT PRIVATE COLLECTION

315

JEAN PROUVÉ (1901-1984)

RARE DEMOUNTABLE CHAIR, MODEL CB22/NO. 301, DESIGNED
CIRCA 1941

oak, plywood, aluminum
37¾ x 15¾ x 18¼ in. (95.6 x 40 x 46.4 cm)

\$25,000-35,000



PROPERTY FROM AN IMPORTANT PRIVATE COLLECTION

316

LE CORBUSIER (1887-1965)

'UNITÉ D'HABITATION' STOOL, CIRCA 1954

painted composite wood
17½ x 13 x 10¾ in. (43.3 x 33 x 27 cm)

\$30,000-50,000



PROPERTY FROM AN IMPORTANT PRIVATE COLLECTION

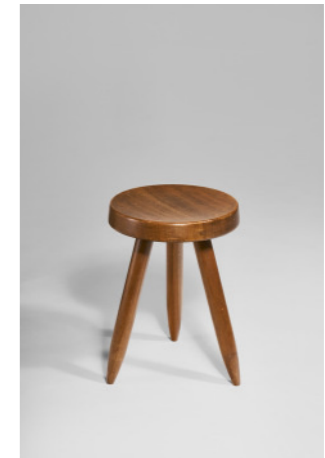
319

CHARLOTTE PERRIAND (1903-1999)

STOOL, DESIGNED CIRCA 1953

African mahogany
17¾ in. (45.4 cm) high, 12¾ in. (32.8 cm) diameter

\$3,000-5,000



PROPERTY FROM AN IMPORTANT PRIVATE COLLECTION

320

CHARLOTTE PERRIAND (1903-1999)

STOOL, DESIGNED CIRCA 1953

African mahogany
17¾ in. (45.4 cm) high, 13 in. (33 cm) diameter

\$3,000-5,000



PROPERTY FROM A PRIVATE INTERNATIONAL COLLECTION

321

CHARLOTTE PERRIAND (1903-1999)
BIBLIOTHÈQUE, DESIGNED FOR THE MAISON DU MEXIQUE, CITÉ INTERNATIONALE UNIVERSITAIRE, PARIS, CIRCA 1952

executed by Ateliers Jean Prouvé
painted steel, painted aluminum, pine, mahogany
63 x 71¼ x 12 in. (160 x 182.2 x 30.5 cm)

\$150,000-250,000



322

JEAN PROUVÉ (1901-1984)
'VISITEUR' ARMCHAIR, VARIANT, MODEL DESIGNED CIRCA 1945
oak, painted metal, with original Simone Prouvé fabric upholstery
37¾ x 27½ x 36¾ in. (96 x 70 x 93 cm)

\$150,000-200,000



PROPERTY FROM AN AMERICAN PRIVATE COLLECTION

325

GEORGES JOUVE (1910-1964)
'ADAM AND EVE' VASE, CIRCA 1950
glazed ceramic
10½ x 11½ x 10¼ in. (25.7 x 29.2 x 26 cm)
signed *Apollon* on base

\$5,000-7,000



PROPERTY FROM A PRIVATE FRENCH COLLECTION

326

JEAN ROYÈRE (1902-1981)
RARE CHAISE LONGUE, CIRCA 1950
patinated wrought iron, upholstery
25 x 67¾ x 23 in. (63.5 x 172.2 x 58.4 cm) (as seen, adjustable)

\$120,000-180,000



323

JEAN PROUVÉ (1901-1984)
'VISITEUR' ARMCHAIR, VARIANT, MODEL DESIGNED CIRCA 1945
oak, painted metal, with original Simone Prouvé fabric upholstery
37¾ x 27½ x 38½ in. (95.5 x 70 x 97 cm)

\$150,000-200,000



PROPERTY FROM A PRIVATE FRENCH COLLECTION

324

CHARLOTTE PERRIAND (1903-1999) AND PIERRE JEANNERET (1896-1967)
BOOMERANG DESK FOR ROGER PIC, PARIS, CIRCA 1948
manufactured in Grenoble, France
pine
28 x 64¾ x 25½ in. (71.1 x 164.5 x 64.8 cm)

\$20,000-30,000



PROPERTY FROM AN AMERICAN PRIVATE COLLECTION

327

JEAN ROYÈRE (1902-1981)
PAIR OF SIDE TABLES, CIRCA 1939
Macassar ebony
20 x 14¼ x 12¾ in. (50.8 x 36.2 x 36.1 cm)

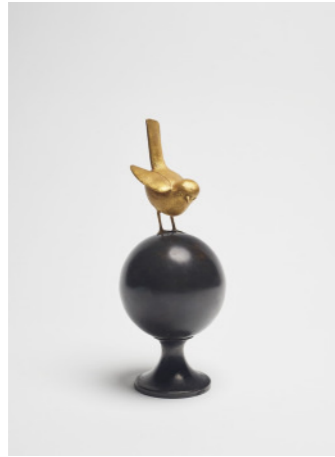
\$15,000-20,000



328

JEAN ROYÈRE (1902-1981)
RARE WINGBACK ARMCHAIR, DESIGNED CIRCA 1952
oak, vinyl upholstery
27 x 24¾ x 28 in. (68.6 x 63 x 71 cm)

\$80,000-120,000



PROPERTY FROM A PRIVATE EUROPEAN COLLECTION

329

FRANÇOIS-XAVIER LALANNE (1927-2008)
'PETIT OISEAU SUR LA BOULE', 2008

gilt bronze, patinated bronze
9½ in. (24.5 cm) high, 4⅞ in. (10.5 cm) diameter (with stand)
monogrammed *FXL*, stamped *LALANNE*, dated 2008 and numbered 5/8A

\$50,000-70,000



PROPERTY OF A DISTINGUISHED COLLECTOR

330

CLAUDE LALANNE (1925-2019)
'CROCODILE' BENCH, 2015

gilt bronze
17½ x 81¼ x 19 in. (44.5 x 207.6 x 48.3 cm)
monogrammed *CL*, stamped *LALANNE*, dated 2015 and numbered 8/8

Estimate on Request



PROPERTY FROM THE COLLECTION OF MS. SALLY ENGELHARD PINGREE

333

JANINE JANET (1913-2000)
'RECUMBENT STAG', DESIGNED IN 1964

patinated bronze
51¼ x 43¼ x 22½ in. (130.2 x 109.9 x 57.2 cm)
signed *JANINE JANET*, numbered 3/18, with foundry mark *E. GODARD CIRE PERDUE* and initialed *C.W.E.*

\$50,000-70,000



PROPERTY OF FUNDACIÓN ZALDUMBIDE ROSALES

334

IVAN DA SILVA-BRUHNS (1881-1980)
RUG, COMMISSIONED BY JULES LELEU FOR GONZALO AND ISABEL ROSALES DE ZALDUMBIDE, CIRCA 1924

manufactured at Savigny, France
hand knotted wool pile
5 ft. 11¼ in. x 3 ft. 2¾ in. (181 x 98.4 cm)
woven with manufacturer's monogram

\$15,000-20,000



331

JEAN DUNAND (1877-1942)
'HIRONDELLES' SCREEN, CIRCA 1930

silver-leaf, lacquered wood
90% x 73 x 1 in. (230.8 x 185.4 x 2.54 cm)
signed *JEAN DUNAND* on lower right recto

\$60,000-80,000



332

EUGÈNE PRINTZ (1889-1948)
SIDEBOARD, CIRCA 1930

lacquered wood, bronze
48% x 79% x 15% in. (123.5 x 239.2 x 39.2 cm)

\$200,000-300,000



PROPERTY OF FUNDACIÓN ZALDUMBIDE ROSALES

335

IVAN DA SILVA-BRUHNS (1881-1980)
RUG, COMMISSIONED BY JULES LELEU FOR GONZALO AND ISABEL ROSALES DE ZALDUMBIDE, CIRCA 1924

manufactured at Savigny, France
hand knotted wool pile
7 ft. 4 in. x 4 ft. 4 in. (223.5 x 132.1 cm)
woven with manufacturer's monogram

\$6,000-8,000



PROPERTY OF FUNDACIÓN ZALDUMBIDE ROSALES

336

IVAN DA SILVA-BRUHNS (1881-1980)
RUG, COMMISSIONED BY JULES LELEU FOR GONZALO AND ISABEL ROSALES DE ZALDUMBIDE, CIRCA 1924

manufactured at Savigny, France
hand knotted wool pile
6 ft. 2¼ in. x 2 ft. 5½ in. (198.5 x 75 cm)
woven with manufacturer's monogram

\$8,000-12,000



PROPERTY OF FUNDACIÓN ZALDUMBIDE ROSALES

337

IVAN DA SILVA-BRUHNS (1881-1980)

RUG, COMMISSIONED BY JULES LELEU FOR GONZALO AND ISABEL ROSALES DE ZALDUMBIDE, CIRCA 1924

manufactured at Savigny, France
hand knotted wool pile
5 ft. 10½ in. x 4 ft. 3½ in. (179 x 130.8 cm)
woven with manufacturer's monogram

\$8,000-12,000



PROPERTY OF FUNDACIÓN ZALDUMBIDE ROSALES

338

IVAN DA SILVA-BRUHNS (1881-1980)

RUG, COMMISSIONED BY JULES LELEU FOR GONZALO AND ISABEL ROSALES DE ZALDUMBIDE, CIRCA 1924

manufactured at Savigny, France
hand knotted wool pile
6 ft. 2 in. x 2 ft. 8½ in. (188 x 82.8 cm)
woven with manufacturer's monogram

\$15,000-20,000



341

FRANK LLOYD WRIGHT (1867-1959) AND GEORGE MANN NIEDECKEN (1878-1945)

IMPORTANT AND RARE THREE-TIER 'FLOWER TABLE', FOR THE LIVING ROOM OF THE AVERY COONLEY HOUSE, RIVERSIDE, ILLINOIS, CIRCA 1908

oak, metal castors
28¾ x 53 x 20 in. (73 x 134.6 x 50.8 cm)

\$150,000-250,000



PROPERTY FROM AN IMPORTANT PRIVATE COLLECTION

342

FRANK LLOYD WRIGHT (1867-1959)

FRAME FROM THE AVERY COONLEY HOUSE, CIRCA 1908
birch, woodblock print, linen, glass
27¼ x 15¼ in. (70.6 x 39.8 cm)

\$2,000-3,000



AMERICAN PIONEER: TWO IMPORTANT COMMISSIONS BY FRANK LLOYD WRIGHT FROM A PRIVATE COLLECTION

339

FRANK LLOYD WRIGHT (1867-1959)

RARE AND IMPORTANT HIGH-BACK DINING CHAIR FOR THE FRANCIS W. LITTLE HOUSE, PEORIA, ILLINOIS, CIRCA 1902

quarter-sawn oak, leather upholstery
52¼ x 16½ x 17¼ in. (132.2 x 41.9 x 44 cm)

\$120,000-180,000



AMERICAN PIONEER: TWO IMPORTANT COMMISSIONS BY FRANK LLOYD WRIGHT FROM A PRIVATE COLLECTION

340

FRANK LLOYD WRIGHT (1867-1959)

RARE AND IMPORTANT HIGH-BACK DINING CHAIR FOR THE FRANCIS W. LITTLE HOUSE, PEORIA, ILLINOIS, CIRCA 1902

quarter-sawn oak, leather upholstery
52¼ x 16½ x 17¼ in. (132.2 x 41.9 x 44 cm)

\$120,000-180,000



PROPERTY FROM THE STEELCASE CORPORATE ART COLLECTION

343

FRANK LLOYD WRIGHT (1867-1959)

IMPORTANT EXECUTIVE DESK MASTER FOR S.C. JOHNSON & SON ADMINISTRATION BUILDING, RACINE, WISCONSIN, CIRCA 1937-1939

painted steel, American black walnut, brass-plated metal
37¼ x 84¼ x 54¼ in. (95.9 x 213.7 x 138.7 cm)
impressed 20 and with Steelcase metal plaque marked STEELCASE INC.
ASSET NO. 257911

\$400,000-600,000



PROPERTY FROM THE STEELCASE CORPORATE ART COLLECTION

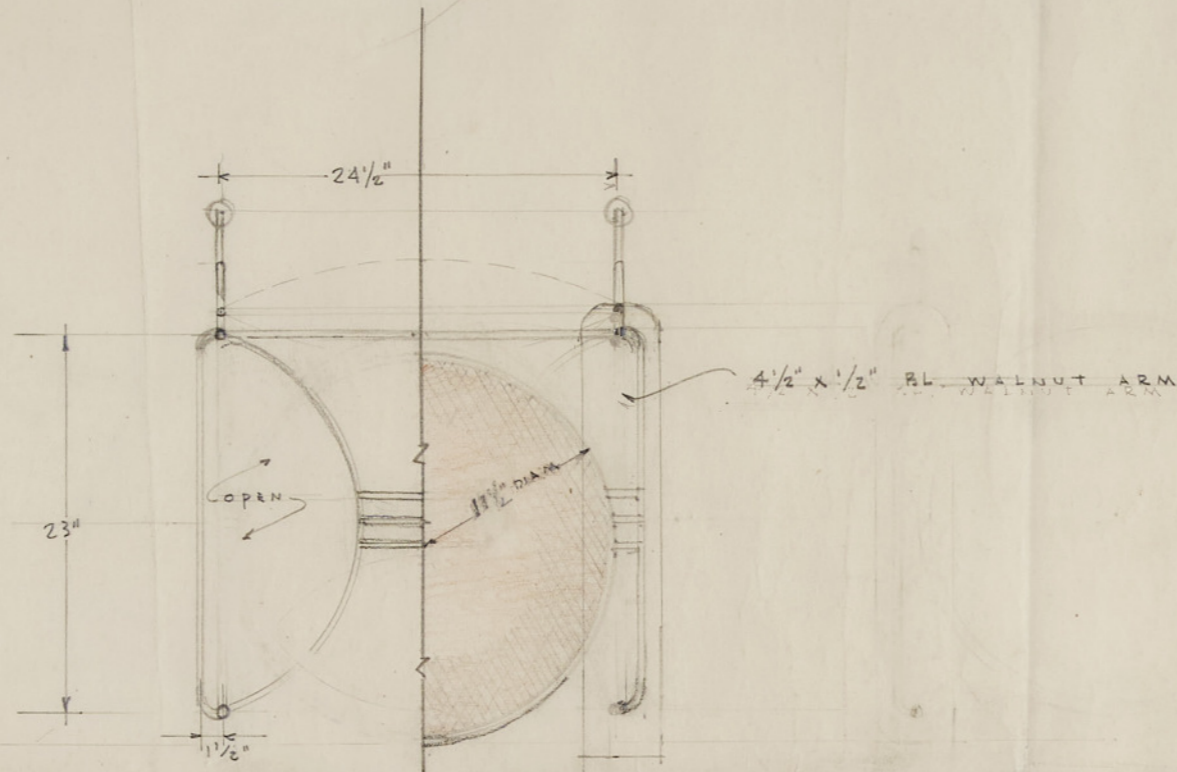
344

FRANK LLOYD WRIGHT (1867-1959)

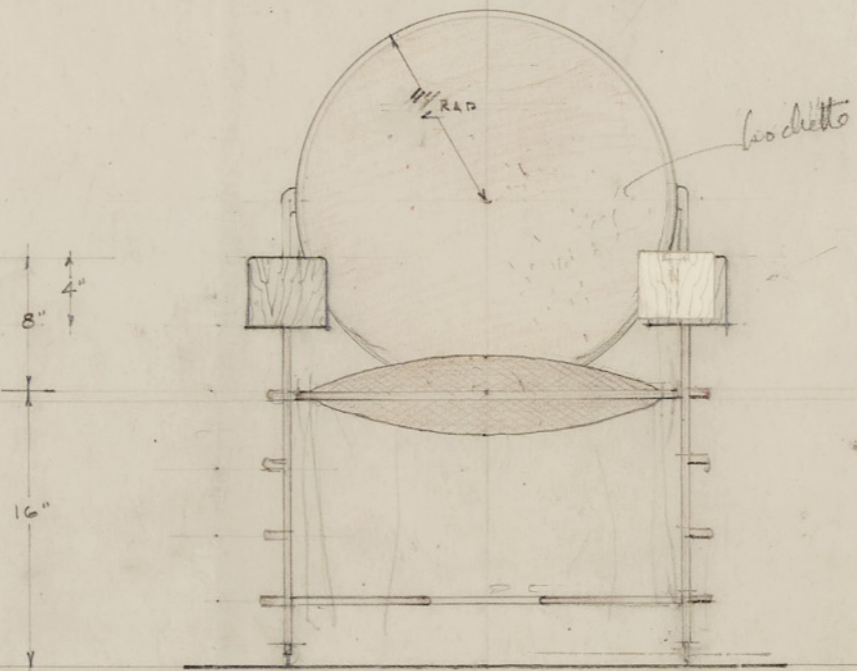
IMPORTANT EXECUTIVE ARMCHAIR MASTER FOR THE S.C. JOHNSON & SON ADMINISTRATION BUILDING, RACINE, WISCONSIN, CIRCA 1937-1939

painted steel, brass, leather, vinyl, fabric upholstery, rubber, maple
35¼ x 24¼ x 17¼ in. (89.5 x 61.6 x 43.8 cm)
with metal plaque marked MASTERS SERIAL No. 0219

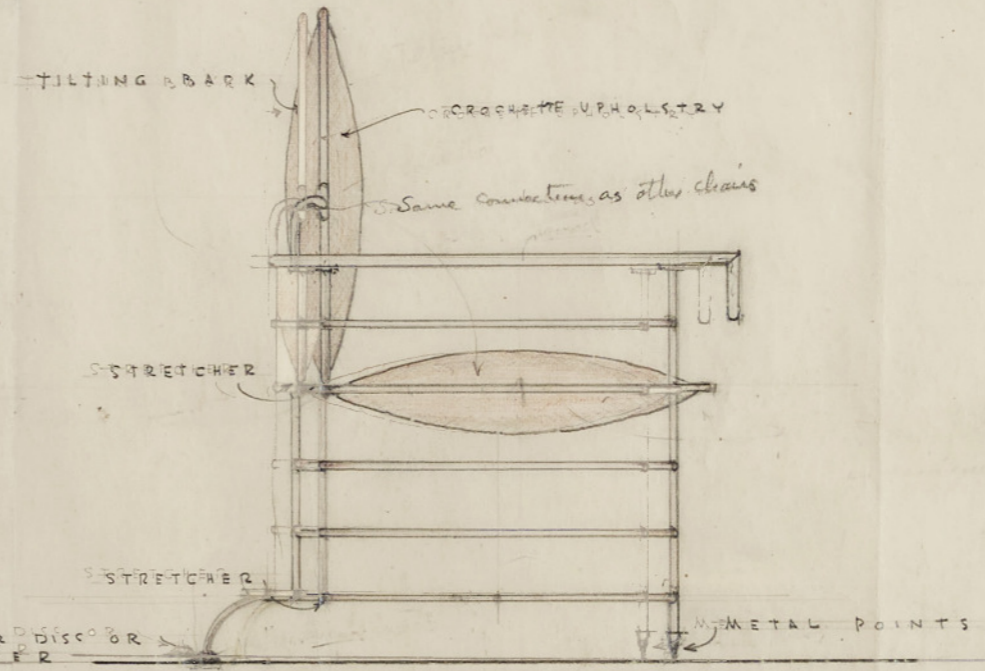
\$70,000-100,000



1/2 PLAN BELOW SEAT 1/2 PLAN ABOVE SEAT



FRONT ELEVATION



SIDE ELEVATION

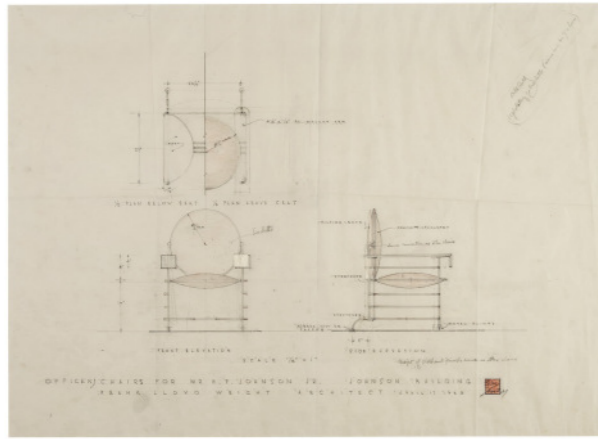
SCALE 1/8" = 1"

Weight of Metal and Finish same as other chairs

*Old Red
Upholstery Crochette (same as in her)*

OFFICERS' CHAIRS FOR MR H. F. JOHNSON, JR. JOHNSON BUILDING
FRANK LLOYD WRIGHT ARCHITECT APRIL 17 1939





PROPERTY FROM THE STEELCASE CORPORATE ART COLLECTION

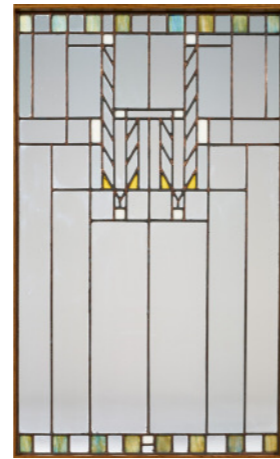
345

FRANK LLOYD WRIGHT (1867-1959)

IMPORTANT DRAWING OF AN OFFICER'S CHAIR FOR THE S.C. JOHNSON & SON ADMINISTRATION BUILDING, RACINE, WISCONSIN, CIRCA 1937

pencil and colored pencil on paper
17½ x 24 in. (44.5 x 60.9 cm) (sight)
30¼ x 33¼ in. (76.8 x 84.5 cm) (frame)

\$20,000-30,000



PROPERTY FROM THE STEELCASE CORPORATE ART COLLECTION

346

FRANK LLOYD WRIGHT (1867-1959)

WINDOW FROM THE MEYER MAY HOUSE, GRAND RAPIDS, MICHIGAN, DESIGNED CIRCA 1908

clear and polychrome leaded glass, wood frame
45¼ in. x 27¼ in. (114.9 x 69.2 cm) (sight)
50 x 31¼ in. (127 x 79.4 cm) (frame)

\$20,000-30,000



PROPERTY FROM THE STEELCASE CORPORATE ART COLLECTION

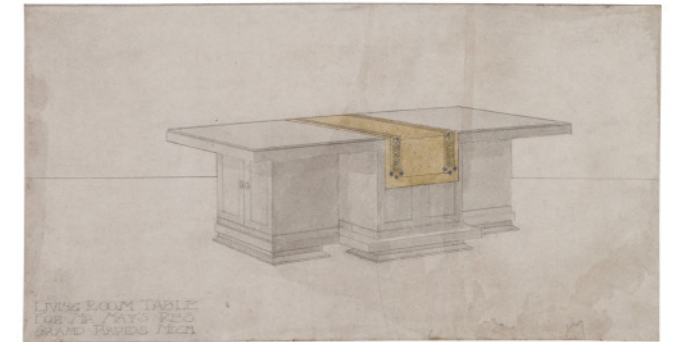
349

FRANK LLOYD WRIGHT (1867-1959)

WINDOW FROM THE MEYER MAY HOUSE, GRAND RAPIDS, MICHIGAN, DESIGNED CIRCA 1908

clear and polychrome leaded glass, wood frame
44½ x 18¾ in. (113.3 x 47.6 cm) (sight)
50 x 23 in. (127 x 58.4 cm) (frame)

\$15,000-20,000



PROPERTY FROM THE STEELCASE CORPORATE ART COLLECTION

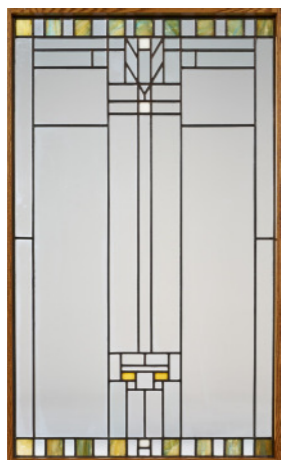
350

FRANK LLOYD WRIGHT (1867-1959) AND GEORGE MANN NIEDECKEN (1878-1945)

DRAWING OF THE LIVING ROOM TABLE FOR THE MEYER MAY HOUSE, GRAND RAPIDS, MICHIGAN, CIRCA 1908

pencil and watercolor on paper
6½ x 11½ in. (15.6 x 29.5 cm) (sheet)
inscribed *LIVING ROOM TABLE FOR MR. MAY'S RES. GRAND RAPIDS MICH.*, original paper board numbered #146

\$6,000-8,000



PROPERTY FROM THE STEELCASE CORPORATE ART COLLECTION

347

FRANK LLOYD WRIGHT (1867-1959)

WINDOW FROM THE MEYER MAY HOUSE, GRAND RAPIDS, MICHIGAN, DESIGNED CIRCA 1908

clear and polychrome leaded glass, wood frame
44½ x 24½ in. (113.2 x 62.5 cm) (sight)
50½ x 30 in. (129 x 76.2 cm) (frame)

\$20,000-30,000



PROPERTY FROM THE STEELCASE CORPORATE ART COLLECTION

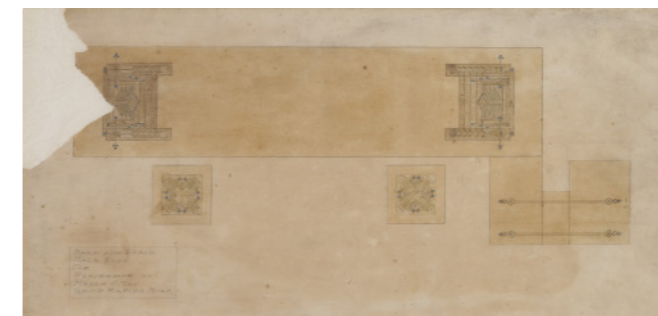
348

FRANK LLOYD WRIGHT (1867-1959)

WINDOW FROM THE MEYER MAY HOUSE, GRAND RAPIDS, MICHIGAN, DESIGNED CIRCA 1908

clear and polychrome leaded glass, wood frame
44½ x 18¾ in. (113.3 x 47.6 cm) (sight)
50 x 23 in. (127 x 58.4 cm) (frame)

\$15,000-20,000



PROPERTY FROM THE STEELCASE CORPORATE ART COLLECTION

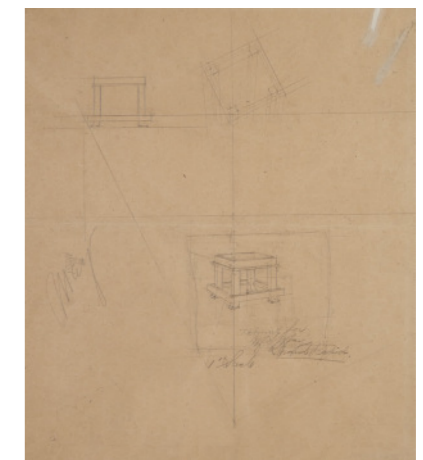
351

FRANK LLOYD WRIGHT (1867-1959) AND GEORGE MANN NIEDECKEN (1878-1945)

DRAWING OF THE SECOND FLOOR HALL RUGS FOR THE MEYER MAY HOUSE, GRAND RAPIDS, MICHIGAN, CIRCA 1908

produced by Niedecken-Walbridge, Co., Milwaukee, Wisconsin
pencil and watercolor on paper
6½ x 12½ in. (17 x 32 cm) (sight)
11 x 17½ in. (27.9 x 45.4 cm) (paper board)
original paper board inscribed #144, along the recto and stamped *PROPERTY OF NIEDECKEN-WALBRIDGE CO. INTERIOR ARCHITECTS, 436 Milwaukee St. MILWAUKEE.* along the verso

\$6,000-8,000



PROPERTY FROM THE STEELCASE CORPORATE ART COLLECTION

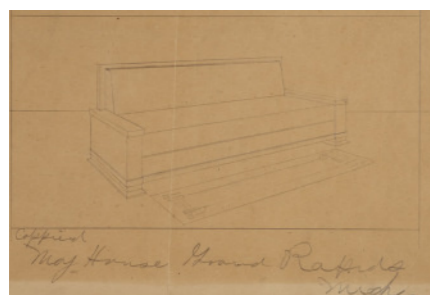
352

FRANK LLOYD WRIGHT (1867-1959) AND GEORGE MANN NIEDECKEN (1878-1945)

DRAWING OF A TABOURET FOR THE MEYER MAY HOUSE, GRAND RAPIDS, MICHIGAN, CIRCA 1908

pencil on paper
14½ x 12½ in. (35.9 x 30.8 cm) (sheet)
inscribed *Tabouret for M S May Grand Rapids and May and 1" scale*

\$6,000-8,000



PROPERTY FROM THE STEELCASE CORPORATE ART COLLECTION

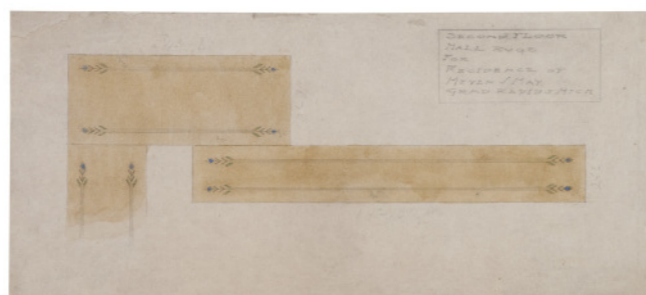
353

FRANK LLOYD WRIGHT (1867-1959) AND GEORGE MANN NIEDECKEN (1878-1945)

DRAWING OF THE SOFA FOR THE MEYER MAY HOUSE, GRAND RAPIDS, MICHIGAN, CIRCA 1908

pencil on paper
11 x 20 $\frac{1}{8}$ in. (27.9 x 53 cm) (sheet)
inscribed [*illegible*] *May House Grand Rapids Mich.* (lower center) and *May* (left edge)

\$6,000-8,000



PROPERTY FROM THE STEELCASE CORPORATE ART COLLECTION

354

FRANK LLOYD WRIGHT (1867-1959) AND GEORGE MANN NIEDECKEN (1878-1945)

DRAWING OF THE HALL AND STAIR RUGS FOR THE MEYER MAY HOUSE, GRAND RAPIDS, MICHIGAN, CIRCA 1908

produced by Niedecken-Walbridge, Co., Milwaukee, Wisconsin
pencil and watercolor on paper
9 $\frac{3}{8}$ x 19 $\frac{1}{8}$ in. (23.8 x 48.7 cm) (sheet)
inscribed *HALL AND STAIR HALL RUGS FOR RESIDENCE OF MEYER S. MAY GRND RAPIDS MICH*

\$8,000-12,000



357

GALLÉ

'RHODODENDRON' TABLE LAMP, CIRCA 1925

mold-blown cameo glass, bronze mounts
18 $\frac{1}{4}$ in. (46.3 cm) high
14 $\frac{1}{8}$ in. (35.9 cm) diameter of shade
shade and base signed in cameo *Gallé*

\$80,000-120,000



PROPERTY FROM AN IMPORTANT AMERICAN COLLECTION

358

ARMAND ALBERT RATEAU (1882-1938)

CENTER TABLE FOR ARMAND ALBERT RATEAU, 17 QUAI DE CONTI, PARIS, CIRCA 1925

oak, black marble, Amazonite, iron
29 $\frac{3}{8}$ x 39 $\frac{3}{4}$ x 39 $\frac{3}{4}$ in. (74.6 x 100.9 x 100.9 cm)

\$100,000-150,000



PROPERTY FROM A PRIVATE COLLECTION

355

CHARLES ROHLFS (1853-1936)

OCTOGONAL CABINET TABLE, CIRCA 1900

oak, wrought iron
29 $\frac{1}{8}$ x 34 $\frac{3}{8}$ x 34 $\frac{3}{8}$ in. (74 x 88 x 88 cm)
carved with the maker's "sign of the saw" cypher

\$40,000-60,000



356

DAUM

'PISSENLIT' VASE, CIRCA 1911

mold-blown glass with acid-etched and wheel-carved decoration
11 $\frac{1}{8}$ in. (30 cm) high, 4 $\frac{1}{4}$ in. (12 cm) diameter
engraved *DAUM NANCY FRANCE* with the Croix de Lorraine

\$15,000-20,000



359

PIERRE CHAREAU (1883-1950)

RARE ARMCHAIR, CIRCA 1925

mahogany, fabric upholstery
30 $\frac{3}{4}$ x 27 $\frac{3}{8}$ x 23 in. (78.1 x 69.5 x 58.4 cm)

\$40,000-60,000



360

PIERRE CHAREAU (1883-1950)

JARDINIÈRE, MODEL NO. PF 35, CIRCA 1923

patinated wrought-iron
40 $\frac{7}{8}$ x 18 $\frac{1}{2}$ x 24 $\frac{3}{4}$ in. (103.8 x 47 x 62.8 cm)

\$10,000-15,000



~361

PIERRE CHAREAU (1883-1950)
RARE 'TABLE BIBLIOTHÈQUE', CIRCA 1923
rosewood, marble
22 x 20 x 22¾ in. (56 x 58.8 x 57.7 cm)
branded with artist's monogram PC
\$30,000-50,000



362

PIERRE CHAREAU (1883-1950)
RARE TABLE LAMP, MODEL LP 166, CIRCA 1925
alabaster, patinated metal
8¼ x 8¾ x 7½ in. (21 x 22.5 x 19 cm)
\$10,000-15,000



PROPERTY FROM A PRIVATE NEW YORK COLLECTION

365
HARRY BERTOIA (1915-1978)
UNTITLED (DANDELION), CIRCA 1960
gilt stainless steel, brass, stone
81 in. (205.7 cm) high, 36 in. (91.4 cm) diameter
\$250,000-350,000



PROPERTY FROM THE ESTATE OF JERRY GANZ

366
HARRY BERTOIA (1915-1978)
UNTITLED (SONAMBIENT), 1977
forty-nine rod in a seven by seven configuration
silicon bronze, beryllium copper, brass
39 x 12 x 12 in. (99 x 30.5 x 30.5 cm)
impressed HB 1.50
\$30,000-50,000



PROPERTY FROM THE COLLECTION OF MS. FRANCES L. WOLFSON

363
JEAN DUNAND (1877-1942)
'LA CONQUÊTE DU CHEVAL', CIRCA 1920
lacquered wood, gold leaf, gesso
30¾ x 28¾ in. (78.5 x 73.4 cm) (framed)
23¾ x 21¼ in. (60.3 x 55.3 cm) (sight)
signed JEAN DUNAND lower left
\$30,000-50,000



364

JEAN DUNAND (1877-1942)
RARE COLLECTOR'S CABINET, CIRCA 1937
lacquered wood, gilt lacquer, brass
42½ x 66¼ x 16½ in. (108 x 168.3 x 41.9 cm)
signed JEAN DUNAND
\$300,000-500,000



PROPERTY FROM AN IMPORTANT PRIVATE COLLECTION

367
GEORGE NAKASHIMA (1905-1999)
MONUMENTAL MINGUREN II COFFEE TABLE, 1984
American black walnut
15 x 83½ x 44¼ in. (38.1 x 212.1 x 129.4 cm)
signed and dated GEORGE NAKASHIMA JUNE 1984
\$120,000-180,000



PROPERTY FROM AN IMPORTANT PRIVATE COLLECTION

368
GEORGE NAKASHIMA (1905-1990)
'GREENROCK' STOOL, 1986
American black walnut, indigo dyed linen
14½ x 20¾ x 20¾ in. (36.8 x 52.7 x 52.7 cm)
signed GEORGE NAKASHIMA FEB 19 1986
\$5,000-7,000



PROPERTY FROM AN IMPORTANT PRIVATE COLLECTION

369

GEORGE NAKASHIMA (1905-1990)
RARE SIDE TABLE, 1976

English oak burl, English oak
15 $\frac{1}{8}$ x 30 $\frac{3}{4}$ x 14 $\frac{1}{8}$ in. (40.3 x 78.1 x 35.9 cm)
signed and dated *George Nakashima May 1976*

\$30,000-50,000



PROPERTY FROM A PRIVATE NEW YORK COLLECTION

370

HARRY BERTOIA (1915-1978)
UNTITLED (SONAMBIENT), CIRCA 1970

sixteen rods in a four by four configuration
beryllium copper, bronze, brass
33 $\frac{3}{8}$ x 10 $\frac{1}{8}$ x 9 $\frac{7}{8}$ in. (84.8 x 25.7 x 25.1 cm)

\$30,000-50,000



PROPERTY FROM AN IMPORTANT PRIVATE COLLECTION

373

ISAMU NOGUCHI (1904-1988)
RARE CHESS TABLE, MODEL NO. IN-61, DESIGNED CIRCA 1947
manufactured by Herman Miller Furniture Company, Zeeland, Michigan
ebonized plywood, cast aluminum, lucite
18 $\frac{3}{4}$ x 25 $\frac{1}{2}$ x 24 $\frac{1}{8}$ in. (47.7 x 63.5 x 62.6 cm)

\$300,000-500,000



PROPERTY FROM AN IMPORTANT PRIVATE COLLECTION

374

ISAMU NOGUCHI (1904-1988)
RARE 'CLOUD' OTTOMAN, MODEL NO. IN-71, CIRCA 1946
manufactured by Herman Miller, Zeeland, Michigan
birch, fabric upholstery
13 $\frac{1}{4}$ x 52 x 32 in. (33.7 x 132.1 x 81.3 cm)

\$150,000-200,000



~371

GEORGE NAKASHIMA (1905-1990)
FRENCHMAN'S COVE DINING TABLE, 1981

walnut, rosewood
28 $\frac{1}{2}$ x 60 $\frac{3}{4}$ x 34 $\frac{3}{4}$ in. (72.4 x 154 x 88.3 cm)
inscribed *HAND & SPIRIT*

\$25,000-35,000



PROPERTY FROM A DISTINGUISHED PENNSYLVANIA COLLECTION

372

HARRY BERTOIA (1915-1978)
UNTITLED (SONAMBIENT), CIRCA 1970

twenty-three rod configuration
Monel, beryllium copper, brass
18 $\frac{3}{4}$ x 8 x 4 $\frac{1}{8}$ in. (47.3 x 20.3 x 11.7 cm)

\$20,000-30,000



PROPERTY FROM AN IMPORTANT AMERICAN COLLECTION

375

ISAMU NOGUCHI (1904-1988)
'RUDDER' STOOL, MODEL NO. IN-22, DESIGNED CIRCA 1944
manufactured by Herman Miller Inc., Zeeland, Michigan
birch, steel, rubber
17 $\frac{3}{4}$ x 20 $\frac{1}{2}$ x 14 in. (45 x 52 x 35.5 cm)

\$15,000-20,000



PROPERTY FROM AN IMPORTANT INTERNATIONAL COLLECTION

376

GEORGE NELSON & ASSOCIATES
RARE TABLE CLOCK, MODEL NO. 2208, DESIGNED CIRCA 1953
manufactured by Howard Miller Clock Company, Zeeland, Michigan
ceramic body by Hyalyn Porcelain, Inc.
glazed ceramic, enameled aluminum
8 $\frac{1}{2}$ x 6 $\frac{1}{4}$ x 4 $\frac{1}{4}$ in. (21.6 x 15.9 x 10.9 cm)
manufacturer's label marked *Howard Miller Clock Company Zeeland, Michigan*

\$5,000-7,000



PROPERTY FROM AN IMPORTANT AMERICAN COLLECTION

377

FAUSTO MELOTTI (1901-1986)

VASE, CIRCA 1950

glazed ceramic
18½ x 9¼ x 6¼ in. (47 x 24.8 x 15.9 cm)
with glazed artist's cypher on the base

\$12,000-18,000



PROPERTY FROM AN IMPORTANT AMERICAN COLLECTION

378

FAUSTO MELOTTI (1901-1986)

VASE, CIRCA 1950

glazed ceramic
23½ in. (59.7 cm) high, 4⅞ in. (12.3 cm) diameter
impressed *Melotti Milano Italy* on the base

\$10,000-15,000



PROPERTY FROM AN IMPORTANT AMERICAN COLLECTION

381

T. H. ROBSJOHN-GIBBINGS (1905-1976)

COCKTAIL COUCH, MODEL NO. 1713-6, CIRCA 1952

manufactured by Widdicomb Furniture Company, Grand Rapids, Michigan
walnut veneer, velvet upholstery
13 x 105 x 41 in. (33.02 x 266.7 x 104.1 cm)

\$8,000-12,000



382

ETTORE SOTTASS (1917-2007)

'MAIOLICA' TONDO, CIRCA 1958

maiolica, glazed and hand-painted stoneware
12⅞ in. (31 cm) diameter
incised *ITALY 530*

\$15,000-20,000



PROPERTY FROM AN IMPORTANT AMERICAN COLLECTION

379

FAUSTO MELOTTI (1901-1986)

VASE, CIRCA 1950

glazed ceramic
25 in. (63.5 cm) high, 6½ in. (16.5 cm) diameter
impressed *Melotti Milano Italy* on the base

\$12,000-18,000



PROPERTY FROM AN AMERICAN PRIVATE COLLECTION

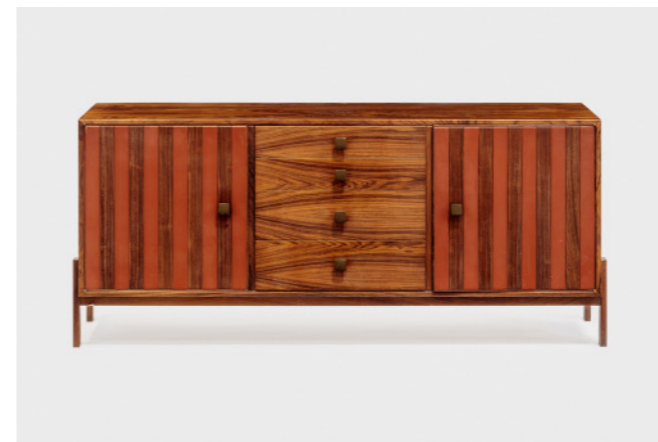
380

PHILLIP LLOYD POWELL (1919-2008)

RARE DINING TABLE, CIRCA 1960

stacked and carved walnut, slate, gold leaf
29½ x 72 x 44 in. (74.9 x 182.9 x 111.8 cm)

\$30,000-50,000



PROPERTY FROM AN IMPORTANT INTERNATIONAL COLLECTION

383

ETTORE SOTTASS (1917-2007)

RARE SIDEBOARD, MODEL NO. MS180, CIRCA 1962

produced by Poltronova, Italy
Macassar ebony, painted Macassar ebony, patinated bronze
30⅞ x 71⅞ x 18⅞ in. (77.8 x 182.6 x 47.9 cm)

\$20,000-30,000



PROPERTY FROM A PRIVATE LOS ANGELES, CALIFORNIA, COLLECTION

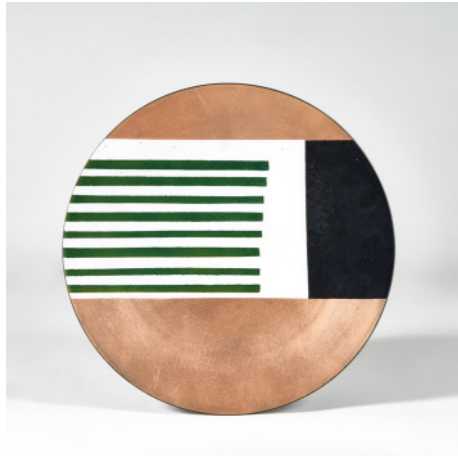
384

ETTORE SOTTASS (1917-2007)

PLATE, CIRCA 1959

enameled copper
11¼ in. (29.9 cm) diameter
impressed *IL SESTANTE* on verso

\$15,000-20,000



385
ETTORE SOTTASS (1917-2007)
 TONDO, CIRCA 1958
 enameled copper
 15½ in. (40.3 cm) diameter
 impressed *IL SESTANTE*
 \$20,000-30,000



386
WENDELL CASTLE (1932-2018)
 UNIQUE 'TREE' TABLE, CIRCA 1962
 walnut, aluminum inlay
 31¼ x 33¾ x 33¾ in. (79.4 x 86 x 86 cm)
 signed and dated *W.C. 62*
 \$40,000-60,000



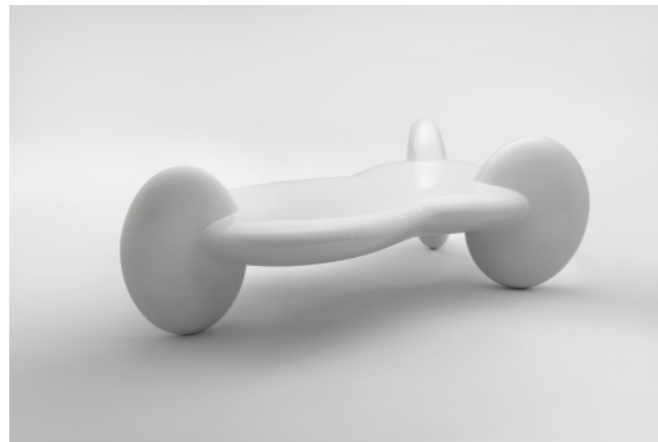
PROPERTY FROM AN IMPORTANT AMERICAN COLLECTION
389
YOICHI OHIRA (B. 1946)
 'SILENZIO' VASE FROM THE 'METAMORFOSI' SERIES, 1999
 executed by Maestro Livio Serena, Anfora, Murano, Italy
 handblown glass canes with powder inserts, polished
 unique
 8¾ in. (22 cm) high, 5¼ in. (13.3 cm) diameter
 incised *Yoichi Ohira Mo. L. Serena Mo. 1/1 unico Friday 4 June 1999 murano* and
 with artist's cypher
 \$7,000-9,000



PROPERTY FROM AN IMPORTANT AMERICAN COLLECTION
390
YOICHI OHIRA (B. 1946)
 'SILENZIO' VASE FROM THE 'METAMORFOSI' SERIES, 1999
 executed by Maestro Livio Serena, Anfora, Murano, Italy
 handblown glass canes with powder inserts, polished
 unique
 9 in. (22.9 cm) high, 5½ in. (14 cm) diameter
 incised *Yoichi Ohira Mo. L. Serena Mo. 1/1 unico Friday 11-06-1999 murano* and
 with artist's cypher
 \$7,000-10,000



PROPERTY FROM AN INTERNATIONAL PRIVATE COLLECTION
387
BARBRO NILSSON (1899-1983)
 'NEJLIKAN' CARPET, DESIGNED 1950
 executed by Märta Måås-Fjetterström workshop, Båstad, Sweden
 hand-woven wool on linen warp
 11 ft. 9½ in. x 7 ft. 1 in. (359.4 x 213.4 cm)
 woven with manufacturer's mark *AB MMF* and artist's initials *BN*
 \$25,000-35,000



388
WENDELL CASTLE (1932-2018)
 'DEM BONES' TABLE, 2007
 polychromed fiberglass
 23 x 74 x 44¾ in. (58.4 x 188 x 113.7 cm)
 signed, dated, editioned *Castle 07 4/8*
 \$15,000-20,000



PROPERTY FROM AN IMPORTANT AMERICAN COLLECTION
391
YOICHI OHIRA (B. 1946)
 'SILENZIO' VASE FROM THE 'METAMORFOSI' SERIES, 1999
 executed by Maestro Livio Serena, Anfora, Murano, Italy
 handblown glass canes with powder inserts, polished
 unique
 9 in. (22.9 cm) high, 5½ in. (14 cm) diameter
 incised *Yoichi Ohira Mo. L. Serena Mo. 1/1 unico Thursday 27 May 1999 murano*
 and with artist's cypher
 \$6,000-8,000



PROPERTY FROM AN IMPORTANT AMERICAN COLLECTION
392
YOICHI OHIRA (B. 1946)
 'SILENZIO' VASE FROM THE 'METAMORFOSI' SERIES, 1999
 executed by Maestro Livio Serena, Anfora, Murano, Italy
 handblown glass canes with powder inserts, polished
 unique
 9 in. (22.9 cm) high, 6 in. (15.2 cm) diameter
 incised *Yoichi Ohira Mo. L. Serena Mo. 1/1 unico Thursday 13-05-1999 murano*
 and with artist's cypher
 \$6,000-8,000



PROPERTY FROM AN IMPORTANT AMERICAN COLLECTION

393

YOICHI OHIRA (B. 1946)

'LAGUNA' VASE, 1999

executed by Maestro Livio Serena, Anfora, Murano, Italy
handblown glass canes with powder inserts, polished
unique

10½ in. (26.7 cm) high, 6 in. (15.2 cm) diameter

incised *Yoichi Ohira Mo. L. Serena Mo. 1/1 unico monday 8 march 1999 murano*
and with artist's cypher

\$7,000-9,000



PROPERTY FROM AN IMPORTANT AMERICAN COLLECTION

394

YOICHI OHIRA (B. 1946)

'LAGUNA' VASE, 1999

executed by Maestro Livio Serena, Anfora, Murano, Italy
handblown glass canes with powder inserts, polished
unique

9 in. (22.9 cm) high, 7½ in. (18 cm) diameter

incised *Barry Friedman Yoichi Ohira Mo. L. Serena Mo. 1/1 unico 02 february 1999 murano* and with artist's cypher

\$6,000-8,000



PROPERTY FROM AN AMERICAN PRIVATE COLLECTION

397

ANDREW LORD (B. 1950)

FLOOR LAMP, CIRCA 1989

bronze, papier-mache

75 in. (190.5 cm) high (including shade), 24½ in. (62.2 cm) diameter of shade

incised *ANDREW LORD 1989 3/10*

\$10,000-15,000



PROPERTY FROM AN AMERICAN PRIVATE COLLECTION

398

GABRIELLA CRESPI (1922-2017)

'Z' DESK, CIRCA 1974

brass-veneered wood, stained wood
with a frieze drawer

28¾ x 26¾ x 59¾ in. (71.5 x 68 x 152 cm)

with applied artist's logo and signed *Gabriella Crespi R*

\$60,000-80,000



PROPERTY FROM AN IMPORTANT AMERICAN COLLECTION

395

YOICHI OHIRA (B. 1946)

'LAGUNA' VASE, 1999

executed by Maestro Livio Serena, Anfora, Murano, Italy
handblown glass canes with powder inserts, polished
unique

11½ in. (29.2 cm) high, 5¾ in. (14.6 cm) diameter

incised *Yoichi Ohira Mo. L. Serena Mo. 1/1 unico friday 05 february 1999 murano*
and with artist's cypher

\$7,000-9,000



396

HUMBERTO CAMPANA (B. 1953) AND FERNANDO CAMPANA (1961-2022)

'DOLPHIN BANQUETE' CHAIR, 2011

leather, stuffed toys, stainless steel, canvas cover
32¼ x 56½ x 36¼ in. (82 x 143.5 x 92 cm)

embroidered *CAMPANA Dolphins in Leather #01/08*

\$15,000-20,000



PROPERTY FROM A PRIVATE FRENCH COLLECTION

399

HELLA JONGERIUS (B. 1963)

'BEAD BULB' LAMP, 2005

produced by Jongeriuslab, Netherlands, and Ufacto, France, for Galerie Kreo, France

knitted beads, polyester, polystyrene, linen tape

31¾ in. (82 cm) high, 14¾ in. (37.2 cm) diameter

The present lot is number 10 from an edition of 20, plus 5 artist's proofs.

embroidered *JONGURIUSLAB BEAD BULB*

\$4,000-6,000



PROPERTY FROM A PRIVATE FRENCH COLLECTION

400

BYUNG HOON CHOI (B. 1952)

'IMAGE PERSISTANTE 08-269' LOW TABLE, 2008

marble, ipé

10¾ x 47 x 27½ in. (27.4 x 119.4 x 69.9 cm)

incised *CHOI. BYUNG HOON 2008* and with artist's cypher

\$15,000-20,000



PROPERTY FROM AN IMPORTANT AMERICAN COLLECTION

401

LAURA DE SANTILLANA (1955-2019)

'VASE, N-2', 2001

handblown and shaped glass
20¼ x 11¼ x 2 in. (51.5 x 30 x 5 cm)

\$7,000-9,000



PROPERTY FROM AN IMPORTANT AMERICAN COLLECTION

402

LAURA DE SANTILLANA (1955-2019)

'VASE, N-3', 2001

handblown and shaped glass
16¼ x 13½ x 1½ in. (41.3 x 34.3 x 3.8 cm)

\$6,000-8,000



PROPERTY FROM AN INTERNATIONAL PRIVATE COLLECTION

405

GAE AULENTI (1927-2012)

'KING SUN' LAMP, MODEL NO. 4045/5, DESIGNED 1967

produced by Kartell, Milan, Italy
enameled aluminum, acrylic
27¾ x 29 x 19¾ in. (70.5 x 73.7 x 48.7 cm)

\$5,000-7,000



PROPERTY FROM A PRIVATE FLORIDA COLLECTION

406

GIO PONTI (1891-1979)

IMPORTANT DINING TABLE FROM VILLA ARREAZA, CARACAS,
VENEZUELA, CIRCA 1954

executed by Giordano Chiesa, Italy
laminated, painted wood, brass
30 in. (76.2 cm) high, 76¾ in. (195.3 cm) diameter

\$70,000-90,000



PROPERTY FROM AN IMPORTANT AMERICAN COLLECTION

403

LAURA DE SANTILLANA (1955-2019)

'VASE, N-1', 2001

handblown and shaped glass
17½ x 14¾ x 1½ in. (44.5 x 36.5 x 3.8 cm)

\$7,000-9,000



PROPERTY OF AN IMPORTANT COLLECTOR

404

MARIA PERGAY (B. 1930)

'LIT TAPIS VOLANT (FLYING CARPET DAYBED)', CIRCA 1968

stainless steel, felt upholstery, castors
15 x 117¾ x 39¾ in. (38.1 x 298.1 x 101 cm)

\$70,000-90,000



PROPERTY FROM A PRIVATE FLORIDA COLLECTION

407

GIO PONTI (1891-1979)

SET OF EIGHT IMPORTANT DINING CHAIRS FROM VILLA ARREAZA,
CARACAS, VENEZUELA, CIRCA 1954

executed by Cassina, Italy
painted ashwood, leather, brass
32¾ x 19½ x 19 in. (83.2 x 49.5 x 48.3 cm)

\$60,000-80,000



PROPERTY FROM A PRIVATE FLORIDA COLLECTION

408

GIO PONTI (1891-1979)

IMPORTANT CONSOLE TABLE FROM VILLA ARREAZA, CARACAS,
VENEZUELA, CIRCA 1954

executed by Giordano Chiesa, Italy
laminated, painted walnut, brass
37¾ x 59¼ x 17¼ in. (96.2 x 150.5 x 43.8 cm)

\$30,000-50,000





409

GIO PONTI (1891-1979)

'DIAMOND' FLATWARE SERVICE, DESIGNED 1958
sterling silver, stainless steel

seven-piece service for twelve, plus ten serving pieces, 106 pieces total

\$10,000-15,000



PROPERTY FROM AN IMPORTANT INTERNATIONAL COLLECTION

410

GIO PONTI (1891-1979)

PAIR OF CHESTS OF DRAWERS, DESIGNED CIRCA 1957

manufactured by Giordano Chiesa, Italy
maple, laminate, brass
31½ x 39½ x 18½ in. (79.7 x 100.3 x 47 cm) (each)

\$80,000-120,000



PROPERTY FROM AN IMPORTANT INTERNATIONAL COLLECTION

413

GIO PONTI (1891-1979)

RARE URN, CIRCA 1933

manufactured by Nino Ferrari, Brescia, Italy
hammered brass
19¾ in. (50.2 cm) high, 19 in. (48.3 cm) diameter
engraved *MADE IN ITALY NINO FERRARI*

\$5,000-7,000



PROPERTY FROM AN IMPORTANT INTERNATIONAL COLLECTION

414

GIO PONTI (1891-1979)

RARE COFFEE TABLE, DESIGNED CIRCA 1948

brass, granite, tempered glass
18¾ x 37¾ x 19¾ in. (7.4 x 14.9 x 7.7 cm)

\$15,000-20,000



PROPERTY FROM AN IMPORTANT INTERNATIONAL COLLECTION

411

MAX INGRAND (1908-1969)

PAIR OF WALL LIGHTS, MODEL NO. 1844, CIRCA 1960

manufactured by Fontana Arte, Milan, Italy
acid frosted glass, enameled steel, brass
15¼ x 27½ x 4¾ in. (38.7 x 68.9 x 11.11 cm) each

\$8,000-12,000



PROPERTY FROM AN IMPORTANT INTERNATIONAL COLLECTION

412

GIO PONTI (1891-1979)

IMPORTANT COFFEE TABLE FROM VIA DEZZA 49, DESIGNED 1954

manufactured by Giordano Chiesa, Italy
enameled steel, brass, glass
14¾ in. (37.1 cm) high, 32 in. (81.3 cm) diameter

\$100,000-150,000



PROPERTY FROM AN INTERNATIONAL PRIVATE COLLECTOR

415

GIO PONTI (1891-1979)

PAIR OF ARMCHAIRS, DESIGNED FOR THE S.S. CONTE GRANDE,
CIRCA 1949

manufactured by Cassina, Meda, Italy
walnut, fabric upholstery
32½ x 28¾ x 27¾ in. (82.6 x 73.3 x 70.5 cm)

\$15,000-20,000



PROPERTY OF A PRIVATE CHICAGO COLLECTION

416

GIO PONTI (1891-1979)

DESK, CIRCA 1955

executed by Giordano Chiesa, Milan, Italy for Singer & Sons
Italian walnut, brass
29¼ x 50. 1/2 x 24¾ in. (74.3 x 128.3 x 63.2 cm)

\$15,000-20,000



PROPERTY FROM AN IMPORTANT AMERICAN COLLECTION

417

FRANCO CAMPO (B.1926) AND CARLO GRAFFI (1925-1985)

RARE ARMCHAIR, CIRCA 1951

satinwood, velvet upholstery, brass
41¼ x 30 x 37 in. (105.4 x 76.2 x 94 cm)

\$50,000-70,000



PROPERTY FROM AN IMPORTANT AMERICAN COLLECTION

418

PIERO FORNASETTI (1913-1988)

'GERUSALEMME DI NOTTE' SCREEN, CIRCA 1954

transfer-printed wood, castor wheels
81¼ x 19¾ x 4¾ in. (206.3 x 50.2 x 11.2 cm)

\$5,000-7,000



PROPERTY FROM AN IMPORTANT AMERICAN COLLECTION

421

PIERO FORNASETTI (1913-1988)

PROTOTYPE CHANDELIER, CIRCA 1950

painted metal, lithographic transfer, brass
39¾ in. (101 cm) diameter, 30½ in. (77.5 cm) drop

\$15,000-20,000



PROPERTY FROM AN IMPORTANT AMERICAN COLLECTION

422

PIERO FORNASETTI (1913-1988)

OBELISK-FORM DESK LAMP, CIRCA 1950

tin, lithographic transfer, plastic, fluorescent light, brass
19⅞ x 4½ x 3⅞ in. (50.5 x 11.4 x 7.8 cm)

with paper manufacturer's label *FORNASETTI MILANO MADE IN ITALY*

\$2,000-3,000



PROPERTY FROM AN IMPORTANT AMERICAN COLLECTION

419

PIERO FORNASETTI (1913-1988) AND GIO PONTI (1891-1979)

'CALLING CARDS' SIDE CHAIR, CIRCA 1950

rawhide-upholstery, ebonized wood
33⅞ x 17½ x 18⅞ in. (86 x 44.5 x 48 cm)

\$3,000-5,000



PROPERTY FROM AN IMPORTANT AMERICAN COLLECTION

420

PIERO FORNASETTI (1913-1988) AND GIO PONTI (1891-1979)

RARE 'CALLING CARDS' WRITING TABLE, CIRCA 1950

lithographic transfer lacquered wood, brass
31⅞ x 35¼ x 17½ in. (79.7 x 89.5 x 44.5 cm)

\$12,000-18,000



PROPERTY FROM AN IMPORTANT AMERICAN COLLECTION

423

PIERO FORNASETTI (1913-1988) AND GIO PONTI (1891-1979)

'ARCHITETTURA' SECRETAIRE TRUMEAU, DESIGNED CIRCA 1950,
EXECUTED CIRCA 1987

lithographic and transfer-printed wood, ebonized wood, brass, glass
95½ x 31½ x 16 in. (217.8 x 38.7 x 40.6 cm)
with paper label *Fornasetti Milano* inside top drawer

\$20,000-30,000



AN ENQUIRING EYE: PROPERTY FROM A DISTINGUISHED PRIVATE COLLECTION

424

JOSEF HOFFMANN (1870-1956)

'RUNDES MODELL' FLATWARE SERVICE, CIRCA 1906-12

executed by Wiener Werkstätte, Vienna
silver, stainless steel blades

\$70,000-90,000



AN ENQUIRING EYE: PROPERTY FROM A DISTINGUISHED PRIVATE COLLECTION

425

JOSEF HOFFMANN (1870-1956)

FIVE PIECE SERVING SET, CIRCA 1907

executed by Wiener Werkstätte, Vienna, after 1907
silver

\$3,000-5,000



PROPERTY FROM THE COLLECTION OF THE HIDA TAKAYAMA MUSEUM OF ART

426

KOLOMAN MOSER (1868-1918)

IMPORTANT PRESENTATION CLOCK FOR MARGARETE
STONBOROUGH-WITTGENSTEIN AND DR. JEROME
STONBOROUGH, 1905

executed by the Wiener Werkstätte, Vienna
ebonized wood, silver, mother-of-pearl
20 $\frac{3}{4}$ x 15 $\frac{1}{2}$ x 14 $\frac{1}{4}$ in. (51.6 x 39.4 x 36.2 cm)
marked *MW JS 7 JANVAR 1905*

\$150,000-250,000



PROPERTY FROM THE COLLECTION OF THE HIDA TAKAYAMA MUSEUM OF ART

429

OTTO WAGNER (1841-1918)

DESK, MODEL NO. 8159, FOR THE ÖSTREICHISCHE
POSTPARKASSE, DESIGNED CIRCA 1906

produced by Gebrüder Thonet, Vienna
stained beechwood, aluminum
42 $\frac{3}{4}$ x 42 $\frac{1}{8}$ x 26 $\frac{1}{8}$ in. (108.6 x 107 x 66.3 cm)
with manufacturer's paper label *Thonet Wien*
stamped on the lock *ALEX ALBERT* and *1492*

\$15,000-20,000



PROPERTY FROM THE COLLECTION OF THE HIDA TAKAYAMA MUSEUM OF ART

430

OTTO WAGNER (1841-1918)

ARMCHAIR, MODEL NO. 6518, DESIGNED FOR THE
ÖSTERREICHISCHE POSTSPARKASSE, VIENNA, CIRCA 1905

produced by Gebrüder Thonet, Vienna, Austria
stained beechwood, aluminum, upholstery
31 x 22 $\frac{1}{4}$ x 19 in. (78.7 x 56.5 x 48.2 cm)
with manufacturer's paper label *THONET*

\$15,000-20,000



PROPERTY FROM THE COLLECTION OF THE HIDA TAKAYAMA MUSEUM OF ART

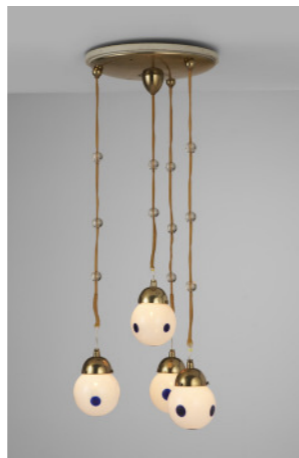
427

JOSEF HOFFMANN (1868-1918)

PAIR OF 'SEVEN BALL' ARMCHAIRS, MODEL NO. 371, DESIGNED
CIRCA 1906

manufactured by J. & J. Kohn, Vienna
bent solid beechwood, molded laminated wood, turned wood
44 x 25 x 21 $\frac{1}{2}$ in. (111.8 x 63.5 x 53.3 cm) (each)

\$30,000-50,000



FROM THE COLLECTION OF THE HIDA TAKAYAMA MUSEUM OF ART

428

ATTRIBUTED TO KOLOMAN MOSER

CHANDELIER, DESIGNED CIRCA 1901

based on a design of a variable chandelier by Koloman Moser
executed by E. Bakalowits Söhne
brass, glass, resin, cord
40 $\frac{3}{8}$ in. (101.9 cm) drop, 14 in. (35.6 cm) diameter

\$10,000-15,000



PROPERTY FROM THE COLLECTION OF THE HIDA TAKAYAMA MUSEUM OF ART

431

OTTO WAGNER (1841-1918)

STOOL, DESIGNED FOR THE ÖSTERREICHISCHE POSTSPARKASSE,
VIENNA, DESIGNED CIRCA 1904-1906

bent solid beechwood, molded laminated wood, aluminum
18 $\frac{3}{4}$ x 16 $\frac{1}{2}$ x 16 $\frac{1}{2}$ in. (47.7 x 41.9 x 41.9 cm)

\$4,000-6,000



PROPERTY FROM THE COLLECTION OF THE HIDA TAKAYAMA MUSEUM OF ART

432

JOSEF MARIA OLBRICH (1867-1908)

TABLE CLOCK, CIRCA 1900

produced by Eduard Hueck, Lüdenscheid
patinated pewter, enamel, steel
8 $\frac{1}{4}$ x 5 x 5 in. (21 x 12.7 x 12.7 cm)
embossed with artist's monogram and producer's mark

\$6,000-8,000



PROPERTY FROM THE COLLECTION OF THE HIDA TAKAYAMA MUSEUM OF ART

433

JOSEF HOFFMANN (1868-1918)
SET OF SIX WALL SCONCES FOR THE VILLA BÖHLER,
KAPFENBERG, DESIGNED CIRCA 1909

executed by the Wiener Werkstätte, Vienna
brass, glass
6½ x 3 x 6 in. (16.5 x 7.6 x 15.2 cm)
stamped *WIENER WERKSTÄTTE*, with manufacturer's marks

(6)

\$30,000-50,000



PROPERTY FROM THE COLLECTION OF THE HIDA TAKAYAMA MUSEUM OF ART

434

JOSEF HOFFMANN (1868-1918)
'SITZMASCHINE' CHAIR, MODEL NO. 670, DESIGNED CIRCA 1905-08
laminated wood, bent solid beechwood, turned wood, brass
43¼ x 26¾ x 33 in. (109.9 x 68 x 83.8 cm)

\$7,000-10,000



FROM THE COLLECTION OF THE HIDA TAKAYAMA MUSEUM OF ART

437

GEORGES DE FEURE (1868-1943)
'LES ADIEUX' CLOCK, CIRCA 1901
patinated bronze, enamel
13½ x 6½ x 5¾ in. (34.3 x 16.5 x 14.9 cm)

\$6,000-8,000



PROPERTY FROM A PROMINENT NEW YORK INSTITUTION

438

C. F. A. VOYSEY (1857-1941)
DONEGAL CARPET, 'FINTONA', CIRCA 1900
execution attributed to Silver Studio, woven for Liberty & Co., London
hand-knotted wool
18 ft. 8 in. x 14 ft. 10 in. (567 x 432 cm) (approximately)

\$60,000-80,000



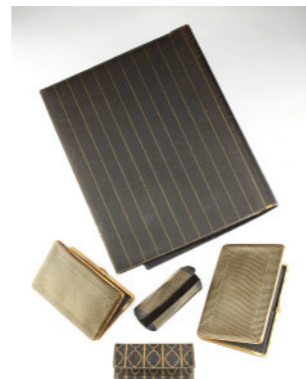
PROPERTY FROM THE COLLECTION OF THE HIDA TAKAYAMA MUSEUM OF ART

435

JOSEF HOFFMANN (1868-1918)
SIDE CHAIR, MODEL NO. 330, DESIGNED CIRCA 1901

manufactured by Jacob & Josef Kohn, Vienna
beechwood, leather, brass
38 x 18½ x 19 in. (96.5 x 47 x 48.3 cm)

\$8,000-12,000



AN ENQUIRING EYE: PROPERTY FROM A DISTINGUISHED PRIVATE COLLECTION

436

JOSEF HOFFMANN (1870-1956)
GROUP OF FOUR CASES AND A PORTFOLIO, CIRCA 1910

executed by the Wiener Werkstätte
embossed and parcel-gilt leather
largest:
13¾ x 10¾ x ¼ in. (35 x 27½ x 1 cm) (folded)
13¾ x 21¾ x ¼ in. (35 x 55 x 1 cm) (unfolded)
each impressed *WIENER WERKSTÄTTE*, one case additionally impressed with
artist's monogram and additional monogram, portfolio impressed with a star

(7)

\$4,000-6,000



PROPERTY OF A DISTINGUISHED NEW YORK COLLECTOR

439

EUGÈNE PRINTZ (1889-1948)
PAIR OF VITRINES, CIRCA 1930

oxidized metal, sycamore, glass
39½ x 78¾ x 12 in. (99.5 x 200 x 30.3 cm) (each)

\$50,000-70,000



PROPERTY FROM THE FORMER COLLECTION OF KOUKA DENIS

440

JEAN-MICHEL FRANK (1895-1941)
LOW TABLE, CIRCA 1940

produced by Comte, Buenos Aires, Argentina
gilt iron, vellum
18¾ x 21¾ x 14½ in. (47.3 x 55.3 x 36.9 cm)
stamped 5301 and with manufacturer's label *COMTE S.A. BUENOS AIRES, 5301*

(2)

\$12,000-18,000



PROPERTY FROM THE FORMER COLLECTION OF KOUKA DENIS

441

JEAN-MICHEL FRANK (1895-1941)
PAIR OF "DRIEU" FLOOR LAMPS, CIRCA 1940
produced by Comte, Buenos Aires, Argentina
silvered bronze
57½ in. (146.1 cm) high, 13¼ in. (33.7 cm) diameter (each)
\$15,000-20,000



PROPERTY FROM THE FORMER COLLECTION OF KOUKA DENIS

442

JEAN-MICHEL FRANK (1895-1941)
PAIR OF SQUARE LOW TABLES, CIRCA 1940
produced by Comte, Buenos Aires, Argentina
iron, vellum
each: 18¾ x 17¾ x 17¾ in. (47.3 x 45.1 x 45.1 cm)
each stamped 1934 and with manufacturer's label *COMTE S.A. BUENOS AIRES*
\$25,000-35,000



445

JEAN BESNARD (1889-1958)
TABLE LAMP, CIRCA 1931
glazed earthenware, iron, paper, straw
14½ (36.9 cm) high, 12¼ (31.1 cm) diameter
signed *Jean Besnard FRANCE*
\$10,000-15,000



PROPERTY FROM AN AMERICAN PRIVATE COLLECTION

446

JEAN-MICHEL FRANK (1895-1941)
TWO TWIN BEDS, CIRCA 1939
lacquered oak
43¼ x 39½ x 77½ in. (109.9 x 99.4 x 196.9 cm) each
each stamped *Chanaux & Co., J.M. Frank, Made in France, 1947*
\$5,000-7,000



PROPERTY FROM THE FORMER COLLECTION OF KOUKA DENIS

443

JEAN-MICHEL FRANK (1895-1941)
RARE FLOOR LAMP, CIRCA 1940
produced by Comte, Buenos Aires, Argentina
wrought iron
63¾ (160.3 cm) high, 13 in. (33 cm) diameter
\$10,000-15,000



444

JEAN-MICHEL FRANK (1895-1941)
PAIR OF SIDE CHAIRS, CIRCA 1930
executed by Chanaux & Pelletier, Paris
sycamore, upholstery
32¼ x 20½ x 23½ in. (81.9 x 52.1 x 59.7 cm)
each impressed *J.M. FRANK* and *CP*
\$40,000-60,000



PROPERTY FROM AN IMPORTANT MANHATTAN COLLECTION

447

PAUL DUPRÉ-LAFON (1900-1971)
PAIR OF TABLE LAMPS, CIRCA 1930
stacked leather, bronze, vellum shade
17¼ in. (43.8 cm) high, 5½ in. (13.9 cm) diameter
\$20,000-30,000



PROPERTY FROM AN IMPORTANT INTERNATIONAL COLLECTION

448

PAUL DUPRÉ-LAFON (1900-1971)
LOW TABLE, CIRCA 1930
vellum, oak, patinated bronze, Belgian fossil limestone
19¼ x 63 x 15¾ in. (50.1 x 160 x 40 cm)
\$100,000-150,000



PROPERTY FROM A DISTINGUISHED FRENCH COLLECTION

449

JEAN ROYÈRE (1902-1981)

PAIR OF ARMCHAIRS, FROM THE CONFERENCE ROOM OF THE ORAN PREFECTURE, ALGERIA, CIRCA 1960

ash, brass, fabric upholstery
33½ x 26¾ x 21¼ in. (85 x 67 x 54 cm)

\$20,000-40,000



PROPERTY FROM A DISTINGUISHED FRENCH COLLECTION

450

JEAN ROYÈRE (1902-1981)

CHAIR, FROM THE CONFERENCE ROOM OF THE ORAN PREFECTURE, ALGERIA, CIRCA 1960

ash, brass, fabric upholstery
33¾ x 18¾ x 21½ in. (85.5 x 47.5 x 55 cm)

\$8,000-12,000



PROPERTY FROM AN AMERICAN PRIVATE COLLECTION

453

LINE VAUTRIN (1913-1997)

'ANANAS' TABLE LAMP, CIRCA 1960

Talose resin, gilt mirror fragments inlay, painted wood
19 x 5½ x 3¾ in. (48.3 x 14 x 9.5 cm)

\$10,000-15,000



PROPERTY FROM A DISTINGUISHED FRENCH COLLECTION

454

JEAN ROYÈRE (1902-1981)

PAIR OF ARMCHAIRS, FROM THE CONFERENCE ROOM OF THE ORAN PREFECTURE, ALGERIA, CIRCA 1960

ash, brass, fabric upholstery
33½ x 26¾ x 21¼ in. (85 x 67 x 54 cm)

\$20,000-40,000



PROPERTY FROM AN IMPORTANT MANHATTAN COLLECTION

451

PAUL DUPRÉ-LAFON (1900-1971)

FLOOR LAMP, CIRCA 1950

beech, leather, metal
66¼ in. (168.3 cm) high, 13¼ in. (33.6 cm) diameter

\$10,000-15,000



PROPERTY FROM AN AMERICAN PRIVATE COLLECTION

452

PAUL DUPRÉ-LAFON (1900-1971)

PAIR OF BEDSIDE TABLES, CIRCA 1940

walnut, leather, brass, marble
19¾ x 23¾ x 14¾ in. (49.2 x 60 x 37.2 cm)

\$8,000-12,000



PROPERTY FROM THE COLLECTION OF MS. FRANCES L. WOLFSON

455

GASTON SUISSE (1896-1988)

'CARDINAL' PANEL, CIRCA 1930

lacquered wood
framed: 46¼ x 36¼ in. (117.5 x 92 cm)
sight: 40¼ x 30¼ in. (102.2 x 76.8 cm)
signed *G Suisse* (lower left)

\$5,000-7,000



456

MAISON DESNY

TABLE LAMP, CIRCA 1930

nickel-plated brass
13¾ x 4⅞ x 4¾ in. (34 x 12.4 x 11.1 cm)
stamped *MADE IN FRANCE*

\$10,000-15,000



PROPERTY FROM AN IMPORTANT AMERICAN COLLECTION

457

ÉMILE-JACQUES RUHLMANN (1879-1933)

CARPET, CIRCA 1925

hand-knotted wool

12 ft. 7½ in. x 11 ft. 8 in. (384.9 x 355.6 cm) (approximately)

\$60,000-80,000



458

ÉMILE-JACQUES RUHLMANN (1879-1933)

'COLLECTIONNEUR' DRESSING TABLE, CIRCA 1925

Macassar ebony, shagreen, ivorine, mirrored glass, silvered bronze

48½ x 36¼ x 20 in. (123.2 x 92 x 50.8 cm)

branded *Ruhlmann* with the Atelier mark *B*

\$80,000-120,000

